

# Drawing with the Things Themselves

## Paola Yacoub

Paola Yacoub was born in Beirut in 1966. She studied at the Beirut Academy of Fine Arts, and graduated from the School of Architecture in London in 1993. She worked on the archaeological excavation's drawings in downtown Beirut from 1995 to 1999.

**b.** BEIRUT ART CENTER  
مركز بيروت للفن

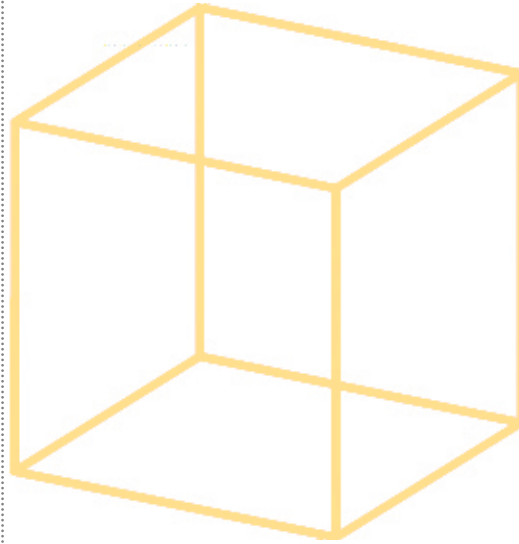
### Put Things in Water and See What Happens

This work is the artist's project for her architectural diploma. Can you guess what architecture she was designing?

Hint: check 'Les Petites Eaux'.

What happens when you put these items in water?

|                  |      |       |
|------------------|------|-------|
| plastic bags     | sink | float |
| dice             | sink | float |
| oranges          | sink | float |
| plastic letters  | sink | float |
| hot wax in a bag | sink | float |



Now put other things in this water tank and draw what it will look like. Write what happened:

.....

What fills the space around us?

.....

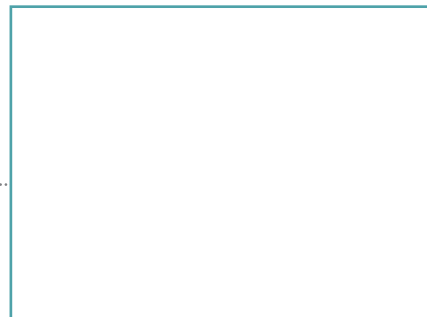
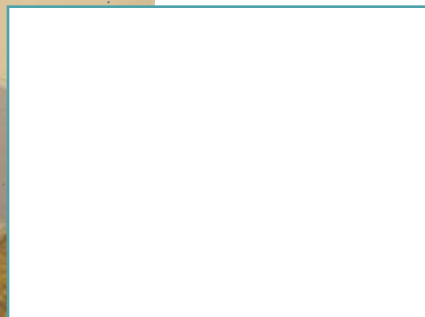
What will happen if it becomes filled with water instead!

Fill in the blanks using some of these words: book, flooded, water, boat, woman, village, film, wax

In the \_\_\_\_\_ Une Histoire D'Eau, a \_\_\_\_\_ is going to Paris by bus, but when she steps out of her house she discovers that the whole village is \_\_\_\_\_ with water. With a \_\_\_\_\_ and a bike she manages to reach a dry spot. A man in a car offers her a lift, they try to find a way out of the area, but all ways are blocked by the \_\_\_\_\_.

can you draw water?

can you draw a voice?

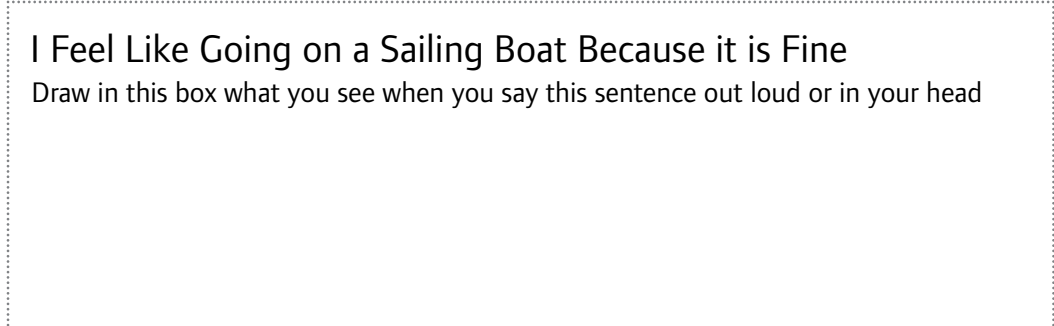


Paola used wax to try how to draw water. What is the difference between wax and water?

Why did the artist slice the moulds of wax into sections?

### I Feel Like Going on a Sailing Boat Because it is Fine

Draw in this box what you see when you say this sentence out loud or in your head

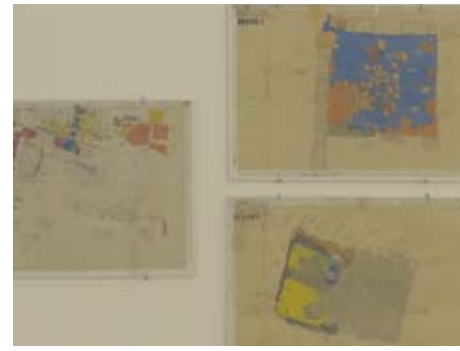


# Casts of Bullet Holes from a North/South Wall Situated on the Green Line

in this white box, trace a rough textured surface using a pencil

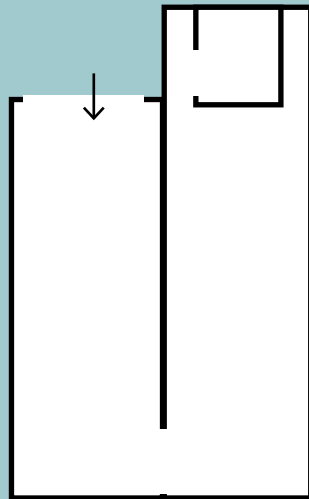
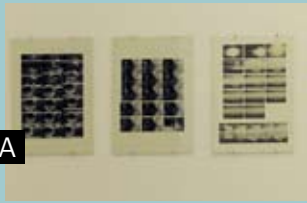


What material did the artist use to make a mould of these holes? Why do you think she used this material? What other materials did the artist use?



The artist made these drawings when she worked with the an institution for archaeology responsible for conducting excavations in Downtown Beirut. What was she drawing here?

To the right is the floor plan of the exhibition space. Using the numbers provided below, locate the following 6 works on the map.



Write the titles of these works:

C. \_\_\_\_\_

D. \_\_\_\_\_

F. \_\_\_\_\_



the above series of photos is titled Summer '88

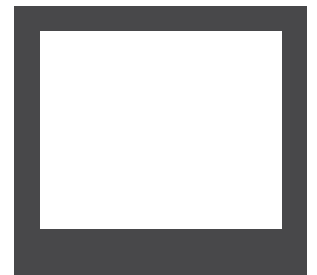
what do you see in it? \_\_\_\_\_

what is '88? \_\_\_\_\_

if you chose another title, what would it be? \_\_\_\_\_

what do you feel when you see this series? \_\_\_\_\_

In the exhibition space, there is a very old slide. It was the first to be used on National Lebanese Television. Can you find this slide and write in this box what you read on it?



what do you think of paola yacoub's work? how does it make you feel? why do you think this is the case?